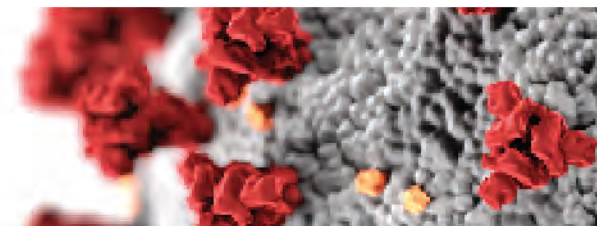


COVID-19 SITUATION REPORT #13



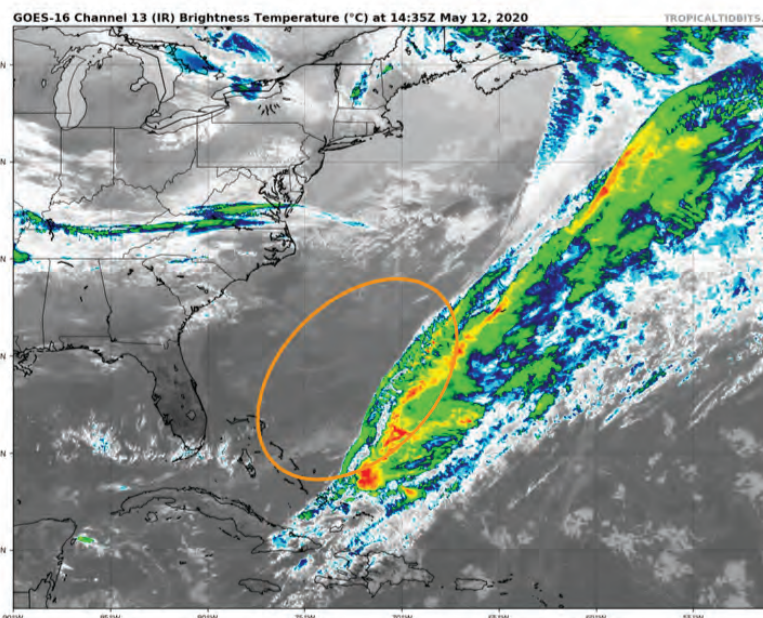
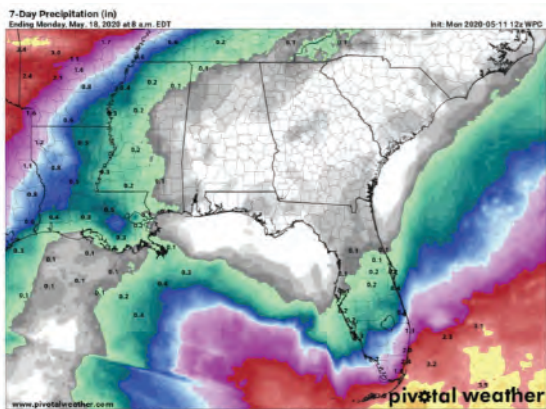
MAY 12, 2020



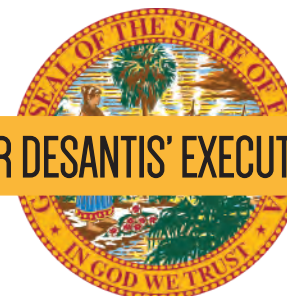
Telehealth Video: Medicare Coverage and Payment of Virtual Services

CURRENT* COVID-19 CASES IN BIG BEND REGION *updated as of 5.12.2020 at 12:00pm

COUNTY	TOTAL CASES	HOSPITALIZATIONS
Calhoun	27	4
Franklin	2	0
Gadsden	137	30
Gulf	1	0
Jackson	131	3
Jefferson	28	7
Liberty	198	0
Leon	266	33
Madison	61	4
Taylor	3	0
Wakulla	31	5



FDEM/SERT TROPICS UPDATE

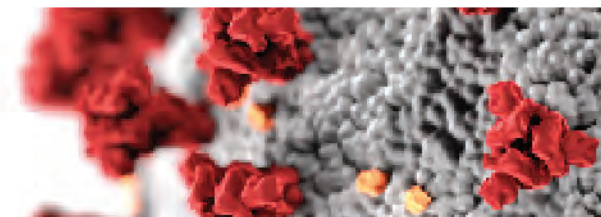


GOVERNOR DESANTIS' EXECUTIVE ORDERS

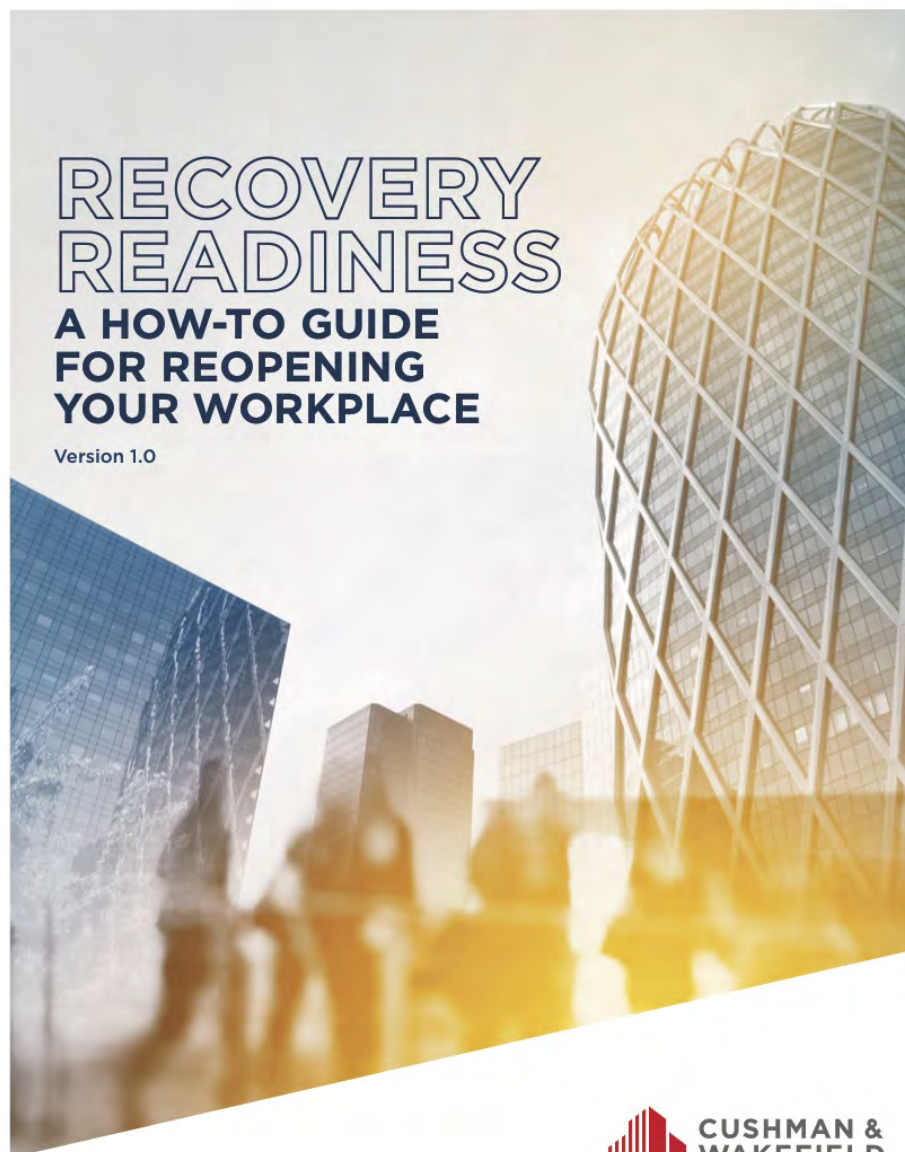
For resource requests in your county please contact your local emergency management office.



COVID-19 SITUATION REPORT #13



MAY 12, 2020



 CUSHMAN &
WAKEFIELD

NEW GUIDANCE AVAILABLE

on Requirements for Notification of Confirmed and Suspected COVID-19 Cases Among Residents and Staff in Nursing Homes

MEDICARE PHARMACIES AND OTHER SUPPLIERS

May Temporarily Enroll as Independent Clinical Diagnostic Laboratories to Help Address COVID-19 Testing MLN Matters® Article

CMS COVID-19 STAKEHOLDER ENGAGEMENT CALLS – WEEK OF 5/11/20

GUIDANCE ON PREPARING WORKPLACES FOR COVID-19

GETTING BACK TO WORK: PREPARING BUILDINGS FOR RE-ENTRY AMID COVID-19

OPERATION OPEN DOORS CHECKLIST

OPEN FOR BUSINESS: A BLUEPRINT FOR SHOPPING SAFE

ENHANCED INDUSTRY-WIDE HOTEL CLEANING STANDARDS

CONSIDERATIONS FOR MUSEUM REOPENINGS

Big Bend Health Care Coalition COVID-19 SITUATION REPORT #13

MAY 12, 2020

State Conference Call Summary:

- All County Health Departments are participating in the May2Day campaign with a goal to test 2% of the population per week.
- Florida has now passed the 40,000 mark of COVID-19 cases.
- 'Data dumps' can be attributed to the spike in case numbers being seen at this time. Percent positivity is currently at 2.12 compared to 4.83 over the weekend.
- The Abbot One Touch machine has been shown to have a 15% false negative rate.
- You may see an increase in private ambulance companies throughout your counties as EMS teams are pairing up with strike teams to provide assessments, testing and visits to long term care facilities throughout the state.
- Remdesivir is now considered a standard of care drug for COVID treatment. The state has currently acquired this and the allocation plan will be released in the next few days.

COVID-19: IRF Interdisciplinary Team Meetings During the Pandemic

COVID-19: IRF Flexibilities During the PHE



One Blood is asking for individuals who have recovered from COVID-19 to donate plasma. For more information, [click here](#).

ESS INFORMATION FOR REPORTING FACILITIES

- ESS is critically important for the State to anticipate demand in the hospital & sub-acute care setting. This data influences decisions on the need for additional support and equipment requests from federal government.
- Facilities MUST verify and update data 2x daily.
- ESS is adding more fields daily. Instructions on these new fields available on the AHCA ESS website.
- Hospitals should estimate the number of med surge beds that can be converted to ICU beds. Do not duplicate bed numbers in different categories. Start with highest acuity beds.
- Corporate Representatives can be established to monitor data entry at individual facilities. Contact AHCA for assistance

SURGEON GENERAL'S PRIORITIES

Florida's 5 STEPS to Prevent COVID-19

1 STOP INTRODUCTION

Stop Introduction into Florida from out of state.

2 TEST, TEST, TEST

Leverage testing capabilities & work to expand capacity.

3 ELDERLY & VULNERABLE PROTECTION

Protect the elderly by increased mitigation and messaging at assisted living centers, nursing homes, and other special facilities.

4 PREPARE HOSPITALS

Assess the potential impacts and course of action for hospitals and bed capacity.

5 SOCIAL DISTANCING

Continue to message social distancing.

Did you get this report second-hand? If you'd like to be added to our COVID-19 Situation Report distribution list, please email your contact info to Zach Annett at zannett@arpc.org

