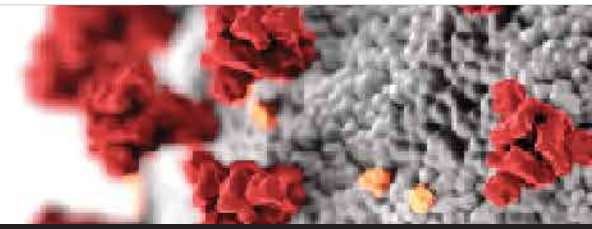
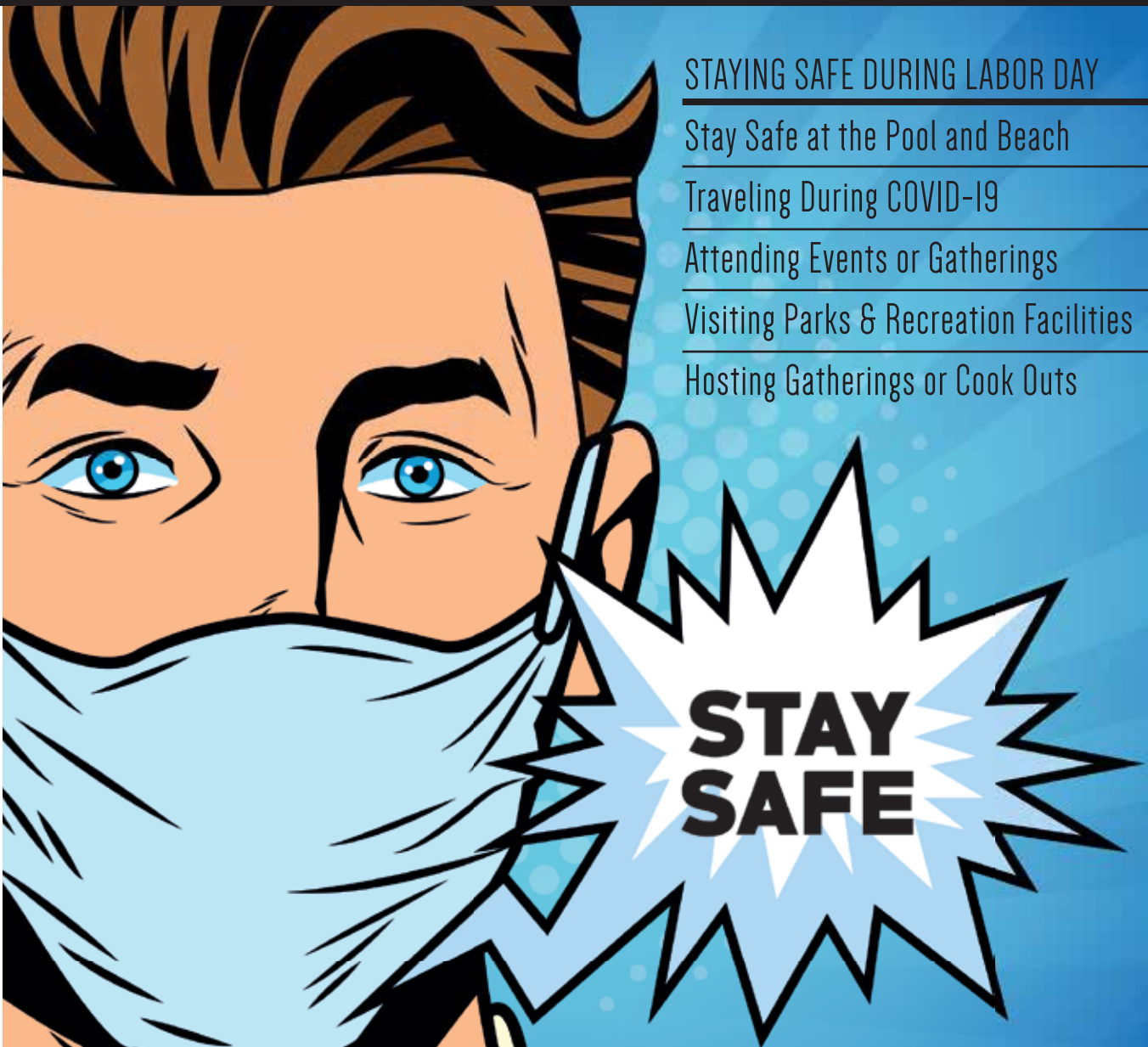


COVID-19 SITUATION REPORT #33



SEPTEMBER 2, 2020



STAYING SAFE DURING LABOR DAY

- Stay Safe at the Pool and Beach
- Traveling During COVID-19
- Attending Events or Gatherings
- Visiting Parks & Recreation Facilities
- Hosting Gatherings or Cook Outs

CURRENT* COVID-19 CASES IN BIG BEND REGION

*updated as of 9.2.2020 at 11:00am

COUNTY	7-day avg. new cases	Current COVID Hospitalizations	Total COVID Fatalities
Calhoun	4	0	10
Franklin	4	0	3
Gadsden	21	121	31
Gulf	4	0	13
Jackson	15	8	66
Jefferson	1	0	6
Leon	77	82	36
Liberty	1	0	7
Madison	6	0	16
Taylor	6	0	9
Wakulla	5	0	7



One Blood is asking for individuals who have recovered from COVID-19 to donate plasma. For more information, click here.

GOVERNOR DESANTIS' EXECUTIVE ORDERS

For resource requests in your county please contact your local emergency management office.



Big Bend Health Care Coalition COVID-19 SITUATION REPORT #33

SEPTEMBER 2, 2020

TROPICS UPDATE

Tropical Storm Omar (Western Atlantic)

Tropical Depression #15 strengthened slightly yesterday and was named Tropical Storm Omar. The system will move northeast away from land, and into the open waters of the North Atlantic where it will dissipate by Thursday.

Tropical Storm Nana (Western Caribbean)

Tropical Storm Nana developed yesterday near Jamaica and is now approaching Honduras and Belize. It may briefly become a hurricane before making landfall tonight. It will move inland over Central America where it will dissipate later this week.



Invest 91L (Halfway Between Africa & Caribbean)

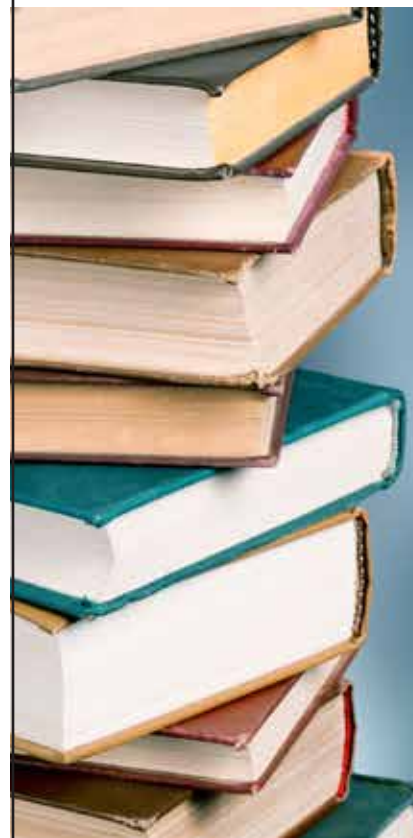
A tropical wave has a broad area of low pressure about midway between the Caribbean and Africa. Some gradual development is possible as it moves very little over the next 5 days. This system has a 20% (low) chance of formation during the next 48 hours and a 30% (low) chance during the next 5 days.

Africa Tropical Wave

A new tropical wave has moved off the coast of Africa and is likely to gradually develop as it moves slowly west. This system has a 10% (low) chance of formation during the next 48 hours but a 60% (medium) chance during the next 5 days.

Florida Outlook:

None of these systems pose a threat to Florida. The tropical waves do not need to be monitored until next week, if at all.



TRAININGS

Center for Domestic Preparedness
Virtual Trainings

Roadmap for Safely Reopening Schools,
Universities, and Businesses

AWR-228 Community Resilience

CMS – CDC Fundamentals of
COVID-19 Prevention for Nursing Homes

COVID-19 Recovery Tabletop Package

FLORIDA

SAFE

 Survey
DEPARTMENT OF ELDER AFFAIRS



Big Bend Health Care Coalition COVID-19 SITUATION REPORT #33

SEPTEMBER 2, 2020

Statewide Conference Call Summary

- Positivity rate is continuing to decline. RT value for Florida is at 0.8 indicating we are seeing decreased spread throughout the state.
- The Florida One Goal Campaign remains important still as these mitigation measures make a difference.
- CMS has issued new guidelines for testing within NH / ALFs. AHCA will be working with these facilities.
- Labor Day is approaching. While we did not see an uptick in case numbers after 4th of July, it is important to remain responsible and practice proper mitigation measures.
- COVID Convalescent Plasma remains readily available and still proves effective.
- EUA for Remdesivir has now been expanded for hospitalized patients, not just those that are severely ill.
- Continue to work with long term care facilities and nursing homes in your organizations and community.

Protect the vulnerable

Wash your hands

Practice social distancing

Wear a mask

ONE GOAL ONE FLORIDA
GOVERNOR RON DESANTIS

TEXT "FLCOVID19" TO 888-777

ESS INFORMATION FOR REPORTING FACILITIES

- ESS is critically important for the State to anticipate demand in the hospital & sub-acute care setting. This data influences decisions on the need for additional support and equipment requests from federal government.
- Facilities MUST verify and update data once daily.
- ESS is adding more fields daily. Instructions on these new fields available on the AHCA ESS website.
- Hospitals should estimate the number of med surge beds that can be converted to ICU beds. Do not duplicate bed numbers in different categories. Start with highest acuity beds.
- Corporate Representatives can be established to monitor data entry at individual facilities. Contact AHCA for assistance

Did you get this report second-hand? If you'd like to be added to our COVID-19 Situation Report distribution list, please email your contact info to Zach Annett at zannett@arpc.org

