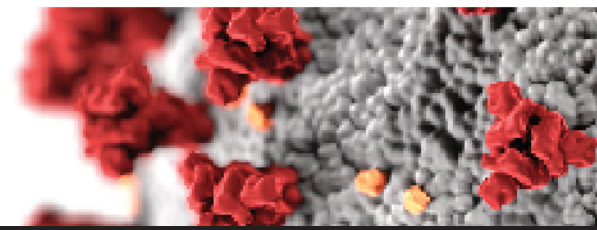
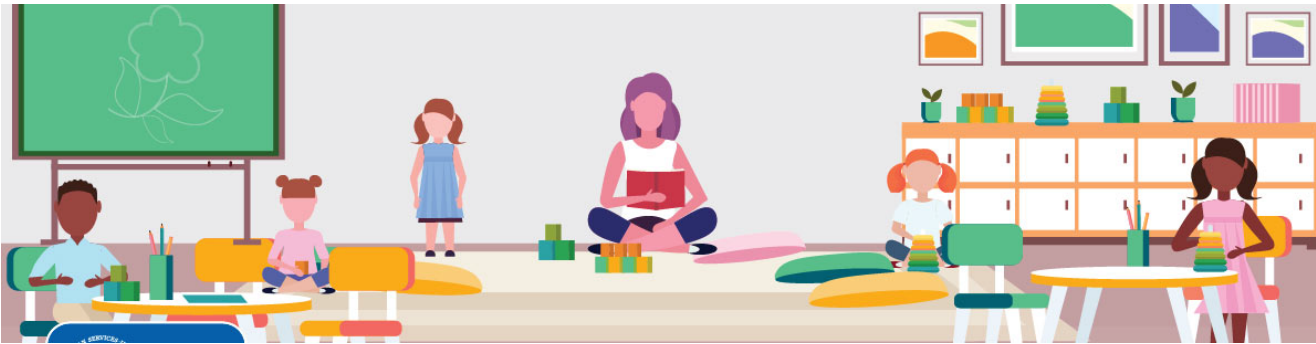


Big Bend Health Care Coalition COVID-19 SITUATION REPORT #15



MAY 19, 2020



CDC Live Stakeholder Call Schedule

Youth Programs and Camps - May 19 from 4-5 PM ET

Schools and Childcare Programs - May 20 from 4-5 PM ET

Workplaces and Mass Transit - May 21 from 4-5 PM ET

Youth Sports - May 22 from 4-5 PM ET

COVID-19 Best Practices

Do you have any best practices you have discovered during your response to COVID-19? These responses are anonymous and will be used to create a report to help better prepare our Region for future infectious disease emergencies. Please click the survey link below to submit your responses. Best Practices Survey

ASPR TRACIE:

Funding Sources for the Establishment and Operationalization of Alternate Care Sites Webinar - May 22nd



Rural EMS Project ECHO Session I: May 21st

'Community Paramedicine Programs: An Overview'

CURRENT* COVID-19 CASES IN BIG BEND REGION

*updated as of 5.19.20 at 12:00pm

COUNTY	TOTAL CASES	HOSPITALIZATIONS
Calhoun	40	4
Franklin	2	0
Gadsden	242	39
Gulf	1	0
Jackson	148	7
Jefferson	28	7
Liberty	199	0
Leon	304	42
Madison	64	4
Taylor	5	0
Wakulla	32	5



One Blood is asking for individuals who have recovered from COVID-19 to donate plasma. For more information, click here.

GOVERNOR DESANTIS' EXECUTIVE ORDERS

For resource requests in your county please contact your local emergency management office.



Big Bend Health Care Coalition COVID-19 SITUATION REPORT #15

MAY 19, 2020

State Conference Call Summary:

- Florida is currently in full phase 1 of reopening and we are currently seeing no new spikes in cases.
- Of the new cases seen, 40% of those are in LTC facilities, nursing homes and prisons systems. DOH is working aggressively with the national guard to expand testing within these populations.
- The state received an additional 6,000 vials of Remdesivir over the weekend. Hospital CEOs should have received guidance on how to obtain doses for patients meeting the criteria.
- Facilities should begin reviewing their plans and preparing for Hurricane season, while also responding to COVID-19.
- FDOH is currently developing a plan to test all staff and residents in LTC facilities.



2020 Hurricane Season

Hurricane season is quickly approaching, beginning in 13 days. It is imperative that facilities begin reviewing their plans and identifying any changes that may have been caused by COVID-19. When reviewing your Emergency Management Plans, look at your current MOA's for things such as sheltering, transportation, supplies, etc. have not changed. If there have been any changes, consult with your county emergency management office early to ensure you are as prepared as possible. NOAA 2020 Hurricane Season Outlook Teleconference

ESS INFORMATION FOR REPORTING FACILITIES

- ESS is critically important for the State to anticipate demand in the hospital & sub-acute care setting. This data influences decisions on the need for additional support and equipment requests from federal government.
- Facilities MUST verify and update data once daily.
- ESS is adding more fields daily. Instructions on these new fields available on the AHCA ESS website.
- Hospitals should estimate the number of med surge beds that can be converted to ICU beds. Do not duplicate bed numbers in different categories. Start with highest acuity beds.
- Corporate Representatives can be established to monitor data entry at individual facilities. Contact AHCA for assistance

SURGEON GENERAL'S PRIORITIES

Florida's 5 STEPS to Prevent COVID-19

1 STOP INTRODUCTION

Stop Introduction into Florida from out of state.

2 TEST, TEST, TEST

Leverage testing capabilities & work to expand capacity.

3 ELDERLY & VULNERABLE PROTECTION

Protect the elderly by increased mitigation and messaging at assisted living centers, nursing homes, and other special facilities.

4 PREPARE HOSPITALS

Assess the potential impacts and course of action for hospitals and bed capacity.

5 SOCIAL DISTANCING

Continue to message social distancing.

Did you get this report second-hand? If you'd like to be added to our COVID-19 Situation Report distribution list, please email your contact info to Zach Annett at zannett@arpc.org

