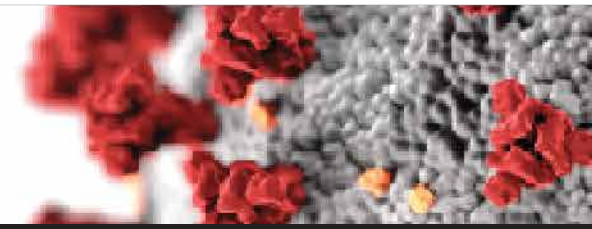


COVID-19 SITUATION REPORT #42



NOVEMBER 10, 2020



CURRENT* COVID-19 CASES IN BIG BEND REGION *updated as of 11.10.2020 at 11:00am

COUNTY	New cases past 7 days	Current COVID Hospitalizations	Total COVID Fatalities
Calhoun	28	0	16
Franklin	10	0	4
Gadsden	24	0	56
Gulf	33	0	15
Jackson	175	25	84
Jefferson	29	0	11
Leon	495	40	119
Liberty	9	0	12
Madison	41	0	25
Taylor	37	0	18
Wakulla	44	0	11

CDC GUIDELINES FOR HOLIDAY CELEBRATIONS AND SMALL GATHERINGS

FDA AUTHORIZES MONOCLONAL ANTIBODY FOR TREATMENT OF COVID-19

POTENTIAL FOR FALSE POSITIVE RESULTS WITH ANTIGEN TESTS FOR RAPID DETECTION OF SARS-COV-2

7 MONTHS, 40 STUDIES, 5 COVID-19 LESSONS LEARNED

COVID SURVIVORS RETESTING POSITIVE



One Blood is asking for individuals who have recovered from COVID-19 to donate plasma. For more information, [click here](#).

GOVERNOR DESANTIS' EXECUTIVE ORDERS

For resource requests in your county please contact your local emergency management office.



Big Bend Health Care Coalition COVID-19 SITUATION REPORT #42

NOVEMBER 10, 2020

COVID-19 PROVIDERS
VACCINE FLOW CHART

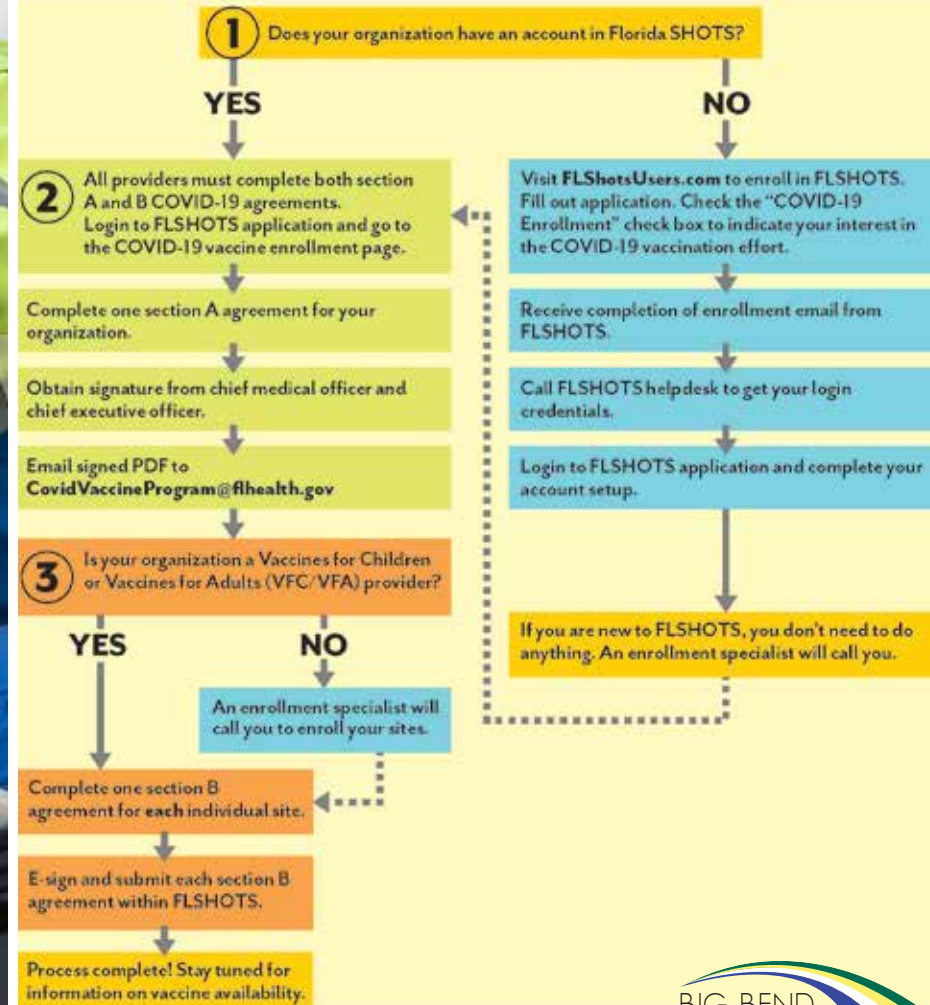
MANAGING STAFFING SHORTAGES

EMS CRISIS STANDARDS OF CARE



COVID-19 Vaccine Enrollment Process for Providers

Florida Department of Health · FloridaHealth.gov · ImmunizeFlorida.org



For a list of resources please visit www.BigBendHCC.org

WEBINARS: RESILIENCE LESSONS FROM COVID FOR THE HEALTH AND MEDICAL SECTORS

Statewide Conference Call Summary

- Shelters are now open in parts of the state for the approaching storm and are using BinaxNOW Abbott test for those entering the shelters. BinaxNow Abbott test is showing to have excellent specificity.
- The Pfizer Vaccine, in its phase 3 trials, have found it to be 90% effective in preventing individuals from getting COVID. Ideal range is to be around 50% so the fact it is showing 90% is promising. They have not filed for an EUA yet but once that occurs, it will be reviewed by the FDA and when/if approved the vaccine can then be distributed.
- This Pfizer Vaccine requires ultracold storage and there is no information at this time when the vaccine will become available, but the state is preparing.
- Point of care testing is available and the FDA has stated there can be some false positives with testing so follow up with PCR Test if possible. All test results need to be reported to DOH within 24 hours whether positive or negative.
- Encourage all to continue following mitigation measures, such as mask wearing which has shown increasing evidence of its efficacy in preventing the spread of COVID. Also continue other measures such as washing hands, social distancing, etc.
- Please encourage individuals to get caught up on routine healthcare with their providers.
- Flu levels in Florida are showing to be moderate at best, which is good. No Major outbreaks currently. Please get vaccinated for the flu as the COVID vaccine cannot be co-administered.
- Increase in overall COVID cases in the state and an increase in hospitalizations. There are over 3,100 hospitalizations currently which is 25% increase in the past two weeks. There has also been an increase in ICU cases but is proportional to the increased hospitalizations.
- Less than 1% of residents in a long-term care setting are testing positive and we are continuing to monitor these populations aggressively.

ESS INFORMATION FOR REPORTING FACILITIES

- ESS is critically important for the State to anticipate demand in the hospital & sub-acute care setting. This data influences decisions on the need for additional support and equipment requests from federal government.
- Facilities MUST verify and update data once daily.
- ESS is adding more fields daily. Instructions on these new fields available on the AHCA ESS website.
- Hospitals should estimate the number of med surge beds that can be converted to ICU beds. Do not duplicate bed numbers in different categories. Start with highest acuity beds.
- Corporate Representatives can be established to monitor data entry at individual facilities. Contact AHCA for assistance

Did you get this report second-hand?
If you'd like to be added to our COVID-19
Situation Report distribution list, please
email your contact info to Zach Annett
at zannett@arpc.org